

BURSCOUGH

Football Club

10/12/2024



VS



Official Matchday Programme
2024/2025 Season



Photos by Ellie Wright

@elliewright_photography



Birkdale
Insurance Group



The Community Ground

The home of Burscough Football Club



As you can see, we are still working hard to complete all the new development and infrastructure improvements at the ground, we appreciate your patience whilst this continues.

We have made great progress since the end of the 23/24 season. Our new function room, the '1946 Lounge', is now fully operational, along with the Churcher Estates-sponsored viewing terrace and a 100-seater stand next to the hospitality suite and accessible viewing area.

Visitors can purchase hot and cold drinks plus a variety of food and snacks at our Burscough FC "snack hut". Along with these is the Burscough FC pitch-side bar, which is fully licensed to sell alcoholic beverages as well as soft drinks.

We hope you enjoy your visit.

We would like to extend a warm welcome to our visitors today...

West Didsbury & Chorlton



Ground: The Community Ground
Address: Bobby Langton Way, Burscough, Lancashire, L40 0SW
Legal Entity: Company limited by shares C/No: 03998165

Burscough FC Honours

Northern Premier League Premier Division Champions: 2006/07

North West Counties League Champions: 1982-83

League Cup Winners: 1992-93, 1995-96

Lancashire Champions: 1955-56, 1969-70

Division Two Champions: 1953-54

Liverpool County Football Combination Champions: 1949-50

FA Trophy Winners: 2002-03

Liverpool Senior Cup Winners: 2000-01

Cheshire Senior Cup Winners: 1974-75

Lancashire Junior Cup Winners: 1947-48, 1949-59, 1966-67, 2006-07

Officials/Committee

Chairman: Paul Gilchrist

Secretary: Christopher Jones

Commercial Director: John Doherty

Programme Editor: Adam Rothwell/Zoe Quinn

Guest Relations/Marketing: Zoe Quinn

Manager: David Dempsey

Asst Manager: Chris Stammers

Physio: Liam Thompson

Fan Liaison Officer: Pete Hill

Directors/Committee: Paul Gilchrist, Joanne Gilchrist, Phil Gilchrist, David Sutton, Christopher Jones, Neil Wilson, Zoe Quinn, Adam Rothwell, Pete Hill, Wayne Kitney, Peter Foulkes.



BURSCOUGH FC MANAGER

DAVID DEMPSEY

Good Evening.

Last time out against West Didsbury saw us take all 3 points in what was an extremely competitive game. We are looking forward to the same again this evening in what I am sure will be a tough encounter.

Lately we have been recruiting players that have strengthened this group no end. We are now extremely optimistic in having a very strong 2nd half of the season and competing to push into the top half of the league. We are fully aware that the last couple of months have seen us fall off track slightly in terms of where our ambitions were at the start of the season however we have everything in place to put that right and start winning more games than we lose.

We are currently 3 wins off beating last season's total wins and we are not even at Christmas yet so we have to look at the progression on the pitch and take small steps in the right direction. We will continue to improve and I am positive come the end of the season we will see this year as a strong building block to build on for future years.

I am really looking forward to tonight's game and I hope we can put on a performance in that you will be proud of.

Best Wishes

Demps



BURSCOUGH FOOTBALL CLUB

2024/25 FIXTURES

JULY/AUGUST 2024

SAT 27/7	LONGRIDGE TOWN (A) L 1-0
TUE 30/7	SQUIRES GATE (H) W 4-2
SAT 3/08	WEST DIDS (A) FA CUP L 3-2
SAT 10/8	WEST DIDS & CHORLTON (A) W 1-2
TUE 13/8	CHARNOCK RICHARD (H) L 1-3
SAT 17/8	RAMSBOTTOM UTD (A) L 4-0
TUE 20/8	LOWER BRECK (H) L 1-2
SAT 24/8	DROYLSDEN (H) FA VASE W 2-1
MON 26/8	PADIHAM (H) D 2-2
SAT 31/8	GLOSSOP NORTH END (H) L0-1

SEPTEMBER 2024

WED 4/9	LITHERLAND REMYCA (A) W 3-1
SAT 7/9	STOCKPORT TOWN (A) W 0-2
TUE 10/9	PRESTWICH HEYS (H) W 1-0
SAT 14/9	RAMSBOTTOM UTD (H) L 0-6
TUE 17/9	FC ST HELENS (A) D 2-2
SAT 21/9	BURY (A) FA VASE L3-0
TUE 24/9	PILKINGTON (H) W 3-2
SAT 28/9	SOUTH LIVERPOOL (H) L 1-2

OCTOBER 2024

TUE 1/10	DAISY HILL (H) MACRON CUP W 4-1
SAT 5/10	COLNE (A) W 0-3
TUE 8/10	AFC LIVERPOOL (A) L 5-1
SAT 12/10	ABBEY HEY (H) L 1-2
SAT 19/10	SOUTH LIVERPOOL (A) D 1-1
TUE 22/10	CHADDERTON (H) L 3-4
SAT 26/10	STOCKPORT TOWN (H) L0-1
TUE 29/10	PRESCOTT CABLES (A) L 1-0 LSC

NOVEMBER 2024

SAT 2/11	LOWER BRECK (A) L 4-2
SAT 16/11	FC ISLE OF MAN (A) L 3-2
TUE 19/11	MAGHULL (A)
SAT 23/11	IRLAM (H)
SAT 30/11	BURY (H)

DECEMBER 2024

FRI 6/12	CHARNOCK RICHARD (A)
TUE 10/12	WEST DIDS & CHORLTON (H)
SAT 14/12	FC ST HELENS (H)
SAT 21/12	PADIHAM (A)
THU 26/12	AFC LIVERPOOL (H)
SAT 28/12	BARNOLDSWICK TOWN (A)

JANUARY 2025

SAT 4/1	PILKINGTON (A)
SAT 11/1	CHEADLE TOWN (H)
SAT 18/1	ABBEY HEY (A)
SAT 25/1	BARNOLDSWICK TOWN (H)

FEBRUARY 2025

SAT 8/2	CHADDERTON (A)
SAT 15/2	SQUIRES GATE (A)
SAT 22/2	IRLAM (A)

MARCH 2025

SAT 1/3	ISLE OF MAN (H)
SAT 8/3	PRESTWICH HEYS (A)
SAT 15/3	COLNE (H)
SAT 22/3	LITHERLAND REMYCA (H)
SAT 29/3	CHEADLE TOWN (A)

APRIL 2025

SAT 5/4	LONGRIDGE TOWN (H)
SAT 12/4	GLOSSOP NORTH END(A)
SAT 19/4	BURY (A)

ALL FIXTURES SUBJECT TO CHANGE



Birkdale
Insurance Group

EXCLUSIVE





Ellen Baybutt

Those that knew Ellen describe her as a lovely lady who was a real character, always jolly and friendly as well as "the lady that ran the snack bar at Victoria Park."

One of three sisters - the middle one between Margaret and Janie - Ellen devoted her spare time to help out the football club that was sited a mere 12 yards from her home on Mart Lane where she was born and lived for an incredible 100 years.

I am told that she was a fantastic baker and her "little fancy cakes" were loved and devoured by directors of BFC and their guests during half time hospitality.

Beyond her snack bar duties, Ellen and Margaret would wash the first team kit and have it looking pristine.

In later years, after she hung up her "canteen pinny" when no longer able to go to the match, Ellen would be standing at her front door waiting to ask the first passing fan returning from the match the simple question... "Who won?"

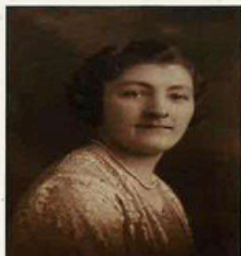
Ellen's devotion to her beloved club was marked by Burscough F.C. bestowing on her the title of Life Vice President.

As her physical health became a problem for her, Ellen moved into Park Grove where her carers remembered her as being "a sharp as a tack" and always kept them on their toes.

Ellen resided at Park Grove until she passed on the 9th October 2013... exactly a month before her 107th birthday.

A fitting tribute came when someone recently described her as...

A True Legend of Burscough Football Club



NWCFL Premier Division League Table



As of 05/12/2024

	Premier Division	P	W	D	L	F	A	GD	Pts
1	Ramsbottom United	26	17	6	3	57	20	37	57
2	Chadderton	26	16	5	5	68	43	25	53
3	Bury	24	15	7	2	69	28	41	52
4	Lower Breck	27	15	7	5	60	35	25	52
5	FC Isle of Man	26	14	4	8	50	38	12	46
6	FC St Helens	24	12	7	5	47	34	13	43
7	West Didsbury & Chorlton	24	12	5	7	48	32	16	41
8	Padiham	23	11	8	4	55	45	10	41
9	AFC Liverpool	25	13	1	11	54	54	0	40
10	Stockport Town	26	12	3	11	36	40	-4	39
11	Irlam	25	11	5	9	46	38	8	38
12	Charnock Richard	26	10	6	10	58	47	11	36
13	Barnoldswick Town	23	10	5	8	35	36	-1	35
14	Abbey Hey	25	10	2	13	46	58	-12	32
15	Cheadle Town	23	9	4	10	33	30	3	31
16	Litherland REMYCA	24	8	5	11	36	48	-12	29
17	Longridge Town	25	8	4	13	49	65	-16	28
18	Glossop North End	24	7	6	11	34	45	-11	27
19	Burscough	25	8	3	14	38	53	-15	27
20	Pilkington	25	6	6	13	41	57	-16	24
21	South Liverpool	27	5	8	14	30	50	-20	23
22	Squires Gate	25	6	4	15	43	63	-20	22
23	Colne	24	3	4	17	20	57	-37	13
24	Prestwich Heys	26	2	3	21	22	59	-37	9

Source: www.nwcfl.com/league-tables



WEST DIDSBURY & CHORLTON CLUB HISTORY



West have a proud history at the centre of the south Manchester community. Read on to find out more about our story.

1908: Christ Church AFC are founded by R.F. Hartley, Sunday School Superintendent at St Luke's Church on Burton Road. From 1908 until 1914, the club play at Shorts Farm in Wilmslow Road, with changing facilities in the cellar of the adjoining Golden Lion pub. Both pitch and pub have long since been redeveloped.

After a few years playing friendlies against the likes of Withington Hospital and Pendlebury Colliery, Christ Church join the Manchester Alliance League and compete until the outbreak of the First World War.

1914: Shortly before the war, the club move to the Christie playing field, between Christ Church on Darley Avenue and Barlow Moor Road.

1919: J.C. Edwards reforms the club following the end of the First World War. To raise funds, members are given subscription books and canvas local residents and businesses for support. Among those canvassed are merchants on the affluent Barlow Moor Road and shopkeepers of Burton Road. Having raised finance, the next target is admittance to a competitive league. J.C. Edwards is again integral, using his contacts to apply for both the Lancashire Amateur League and the Lancashire & Cheshire Amateur League ahead of the 1920/21 season.

1920/21: Both leagues accept the club, and the Lancashire & Cheshire Amateur League is chosen due to its fewer long away trips. As a result of league rules forbidding club names associated to other organisations, the club is renamed West Didsbury AFC.

1924/25: "West Didsbury AFC" is engraved on a trophy for the first time as the Aggregate Trophy, awarded to the club with the highest combined points total for first and second teams, is won ahead of rivals Bramhall.

1926/27: Despite an erratic league season, West secure the Rhodes Cup for the first time. Davenport are defeated 2-1 in the final thanks to goals from Holmes and Brierley. In the 1920s and 30s, the club becomes notable for its sizeable fanbase. Former L&C League President W.A. Williamson recalled: "I as a player with Bradford Parish in the later 1920s and early 30s remember many hard battles with West Didsbury who in those days were one of the very best teams in the League. The ground at Christies was surrounded two or three deep all round the pitch, such was the interest in the leading Lancashire and Cheshire League sides".

1940: The club's activities are overtaken by the outbreak of the Second World War. On 9th March, secretary Cliff Hughes notes that the club is discontinued due to a shortage of playing members. Despite this, an Annual General Meeting is held on 20th May at which it is agreed to continue the club in order to devote efforts to junior football. The club also organises a comforts fund for members already serving or soon to serve in the armed forces. The fund, which provides serving members with regular donations and contact from club members and friends in Manchester, continues until 1946.

1946: The club recommence activities in full following the end of the war. The opening fixture of the 46/47 season is a dramatic 5-5 draw with rivals South Salford.

1952/53: Despite 3rd place finishes in 1948 and 1949, West fall away and endure a terrible season. Rusholme win a play-off 3-1 to confirm West's first-ever relegation and end a 32-year spell in the L&C League's top flight.

WEST DIDSBURY & CHORLTON CLUB HISTORY



1953/54: West's spell in the L&C League's second tier is short-lived as 2nd place, behind fellow relegated side Old Standians, confirms an immediate return to the First Division. Despite promotion, the following years were an inconsistent period for the club. Another relegation followed in 1959/60 and a return to the First Division wasn't to follow until six seasons later. In 1963/64, West were close to an ignominious drop to the Third Division, with only a series of new signings lifting the team to safety.

1969/70: Despite only finishing 9th in the Second Division, West secure the Rhodes Cup for the second time after beating Monton Amateurs 3-2 after extra time.

1974/75: The Rhodes Cup success proves to be a false dawn as West hit an all-time low, relegated to the Third Division after a nightmarish season of just three wins. A root-and-branch review of the club confirms a need for more coherence between the first and second teams. In November 1975, the Albert Club on Old Lansdowne Road agree to let the club use their facilities for after-match meetings and Christmas events. This move, along with the creation of a club newsletter, revitalises West.

1976/77: West knock out Birch Vale, West Flixton, Alderley St Phillips and Royton Amateurs on their way to the Whitehead Cup final against First Division side Heywood GSOB. The Football Pink reports: "Third Division West Didsbury inscribed their names on the Whitehead Cup for the first time with a superb win over First Division Heywood. Rob Turley gave West Didsbury the lead in the second half and wrapped it up with a second with 20 minutes to go after they had soaked up some tremendous pressure".

1980: Manchester and Salford Playing Fields Society give the club notice to leave Christies after selling the land for commercial development. West shrug off the eviction to enjoy a successful period towards the end of the 1980s. Consecutive championships – in the Third and Second Divisions – are secured in 1988 and 1989, and the Aggregate Trophy is won for the first time since 1928 in the 1987/88 season.

1996: After several years' nomadic existence, the club acquires the redundant and overgrown Recreation Ground at Brookburn Road in Chorlton and makes plans to restore the ground and develop a vision for a community club.

2003: The club is renamed West Didsbury & Chorlton AFC to reflect the new location.

2006: Election to the Manchester League is secured, ending the club's long stay in the Lancashire & Cheshire Amateur League.

2007/08: In the final game of the club's centenary year, West lift the Murray Shield – the first silverware of the Manchester League era.

2010/11: The first team wins the Manchester League First Division title with 65 points from a possible 72, one of the highest points totals in Manchester League history.

WEST DIDSBURY & CHORLTON CLUB HISTORY



2011: Floodlights are erected at the Recreation Ground in time for West to play in the FA Vase for the first time, losing 2-0 at Ashville in the Second Qualifying Round.

2012/13: The club's ascent continues with election to Step 6 and the North West Counties Football League. In a remarkable first season, West are promoted to the Premier Division and win the First Division Cup with a 1-0 win over Abbey Hey at Runcorn Linnets' Millbank Stadium.

2013/14: West compete in the FA Cup for the first time, beating Abbey Hey 2-0 in the Extra Preliminary Round before bowing out at home to Burscough.

2015/16: West make national headlines for hammering Dinnington Town 15-1 in the FA Vase, the biggest win in the competition's history. Later that season, Jeff Smith MP opens new facilities at Hardy Farm and plans are drawn up to expand the Brookburn Road clubhouse and spectator areas. However, the season ends on a sad note with the death of Rob Turley, a man who had been involved with West Didsbury & Chorlton for over 40 years and the mastermind behind the club's move to semi-pro football.

2017/18: West celebrate another landmark as the women's section begin play. The new team finish 2nd in the NWWRF First Division South in their first season, reach the semi-finals of the Manchester FA Women's Cup and reach first round proper of the Women's FA Cup.

2018: 812 fans watch West beat Maine Road in a May Bank Holiday Monday derby, setting a new attendance record.

2018/19: A season of contrasting fortunes as the men's side are relegated to the NWCFL First Division South after six seasons at Step 5. However, the women's first and development teams are crowned champions of their respective leagues and earn promotion – the first team achieving an unbeaten season.

2021: Despite two years' disruption due to the coronavirus pandemic, the club remain in a strong position with men's, women's, juniors' and veteran's sides sporting the white and black across the North West on a weekly basis and one of the largest fanbases in local non-league football.

2022: The conclusion of the 2021-22 season resulted in West being promoted back to the NWCFL Premier Division having a great season winning the Division One – South Title with 91 points, and scoring 114 goals conceding 29 ending with a goal difference of 85. West also reached the final of the Lancashire Challenge Trophy losing out 2-1 against Southport. Our fan based continued to grow with a capacity of 1,200 watching our final home league game. The club remains strong across all areas with a Men's first team & new elite development squad established this year. A thriving Juniors section of 24 teams across all ages, including Wildcats. And a Women's section with First, Reserves & Development Teams

2023: West complete an incredible season finishing a credible 9th in the NWCFL Premier Division; however, the highlight was a fantastic run in the FA Vase reaching the quarter finals only to lose in a penalty shoot – out against the eventual winners Ascot United.

2024/25

Player Sponsorships



James McCulloch (C)
PLAYER SPONSORSHIP AVAILABLE



Ben Barnes
Sponsored by
ASHLEY JADE
VOCATIONAL COLLEGE



Harry Cannon-Noren
Sponsored by
ASHLEY JADE
VOCATIONAL COLLEGE



Anthony Walsh
PLAYER SPONSORSHIP AVAILABLE



James Barrigan
PLAYER SPONSORSHIP AVAILABLE



Cian Spencer-McDermott
PLAYER SPONSORSHIP AVAILABLE



Kian Bell
Sponsored by
Frank Hill & Suzanne Hill



Charlie Ball
Sponsored by
Frank Hill & Suzanne Hill



Stephen Rigby
Sponsored by
ASHLEY JADE
VOCATIONAL COLLEGE

2024/25

Player Sponsorships



Che Trapasso-Tully
Sponsored by
REVIL8



Matty Hamilton
PLAYER SPONSORSHIP AVAILABLE



John McGrath
PLAYER SPONSORSHIP AVAILABLE



Matty Coughlan
PLAYER SPONSORSHIP AVAILABLE



Delial Brewster
Sponsored by
Jesso The Goalkeeper



Sam Sheen
PLAYER SPONSORSHIP AVAILABLE



Mason Duff
PLAYER SPONSORSHIP AVAILABLE



Callum Laird
Sponsored by
Pete Hill



Tom Dean
PLAYER SPONSORSHIP AVAILABLE



Owen Cushion
PLAYER SPONSORSHIP AVAILABLE



James Salkeld
PLAYER SPONSORSHIP AVAILABLE



James Salkeld
PLAYER SPONSORSHIP AVAILABLE



BOOK OUR PITCH

Burscough FC's Community Ground
is now available to Book.
Perfect for 5/7/9 a side games

Winter Training and 11-a-side Matches.
Contact us now to book a slot!

BOOK TODAY!

01704 335506

chairman@burscoughfc.com

burscoughfc.com/pitch-booking/



3G Pitch | Floodlights | Changing Facilities | Free Parking

Welcome to our 1946 Lounge & Viewing Terrace

Completed during the 23/24 season, the Burscough FC 1946 Lounge and Viewing Terrace offers spectators a premier experience. Guests can watch matches from the Churcher Estates terrace while enjoying drinks from the fully stocked, licensed bar, which features an exceptional selection.

The Function Suite, with a capacity of up to 80 people, is available for private hire, making it an ideal venue for a variety of events, including:

Matchdays
Award Evenings
Networking Events
Birthday Parties
Funerals
Weddings
Christenings

Complimentary free on-site parking is include with all room bookings

For any event or celebration, quotes are available upon request when emailing marketing@burscoughfc.com



Spectator Seating solutions from 50-400. Club Colours As Standard Free Artwork & Design Service. Groundwork & Fencing solutions. Trusted by over 70 clubs 12 week lead time From just £9,999



**sales@elitestandsuk.com
07426 824410**





BURSCOUGH FC REWARDS



POWERED BY

EXCLUSIVE
REWARDS

K60BEJMXN

Burscough FC are gifting all our loyal supporters a Diamond Membership of Burscough FC Rewards worth £19.99 per year.

Burscough FC Rewards will save you hundreds of pounds a year on everything you buy online at over 3,500 of the UK's major retailers and other fantastic savings in your local and high street stores and restaurants nationwide.

Simply visit burscoughfc.exclusiverewards.co.uk or scan the QR Code and use the code displayed in the box. Once you have clicked the "Join" button to open your **FREE** Diamond Account you will have full access to all the savings on the platform.

Every time you buy anything on the Burscough FC Rewards platform, not only will you be receiving **FREE** money on everything you buy, you will also be generating valuable income for Burscough FC.

We hope you enjoy your free membership, and we appreciate your loyal support.

Completely Free membership worth £19.99 per year

Save Hundreds of pounds per year when you shop online at 3,500 major retailers

Fantastic extra offers available to you as a Diamond Club member

It's Free... It saves you money... and it helps Burscough FC





Protect your business with **Commercial** Insurance



Commercial Combined
Policies



Commercial & Residential
Property Owners



Shops & Offices



Pubs &
Restaurants



Professional
Indemnity



Public & Employers' Liability



Deposit & Monthly Direct
Debit payments available



Taxi & Courier Insurance



Fleet Insurance



Birkdale
Insurance Group

Ensure the best. Insure with the best.

www.birkdaleinsurancegroup.co.uk • 01704 336900



Help Rainbow Hub to brighten the lives of children with disabilities

Rainbow Hub is a local charity that supports children with disabilities, caused by neurological conditions and brain injuries, to live more active, independent and fulfilled lives... and to achieve their potential!

To donate and find out more, please scan the QR code

SCAN ME



☎ 01704 823276 🌐 rainbowhub.org ✉ fundraising@rainbowhub.org



**RAINBOW
HUB**
Every day is a life changing day

Rainbow Hub, Salt Pit Lane,
Mawdesley, Ormskirk, L40 2QX



Rainbow Hub is the trading name of Rainbow Hub NW Ltd. Rainbow Hub is a company limited by guarantee registered in England and Wales, registered office address: Salt Pit Lane, Mawdesley, Nr Ormskirk, Lancashire, L40 2QX, registered company number: 6725399, and a charity registered in England and Wales, registered charity number: 1127495

LATUNE GARDENS, LATHOM, WN8 8UT

SHOW
HOMES
COMING
SOON

FIND YOUR IN LATHOM



A Wain home is more than just a space to live, it's a place that lets you be you. All our homes are built for whatever life throws at them - whether you're looking for a first home, one big enough for a growing family, or a home with larger, lighter rooms and a garden with space to breathe.

2, 3 & 4 bedroom homes

Part Exchange available on selected plots.*

Register your interest today on **07508 331883**

Open Thurs to Mon, 10am - 5pm

Our sales office is currently located at JMO Sports Park, WN8 8BX

DISCOVER YOUR KIND OF PERFECT AT **wainhomes.co.uk**

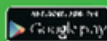
wain
HOMES

*Part Exchange is available on selected developments and plots only, subject to status. Terms and conditions apply, see our website for further details - [wainhomes.co.uk/ways-to-buy/part-exchange-terms-and-conditions/](https://www.wainhomes.co.uk/ways-to-buy/part-exchange-terms-and-conditions/). Part Exchange cannot be used in conjunction with any other schemes. Wain Homes reserves the right to withdraw these offers at any time. Please speak to a Sales Executive for further information. Prices and details are correct at time of going to print. Images are representative and used for illustrative purposes only and may include optional upgrades at an additional cost.

REPORT IT.



KICK IT OUT OF FOOTBALL.





MERITEC
Talent & Technology

STATE OF MIND HAS TEAMED UP WITH MERITEC LIMITED AND THE NORTH WEST COUNTIES FOOTBALL LEAGUE TO PRODUCE AN ONLINE AWARENESS COURSE TO HELP IMPROVE MENTAL HEALTH AWARENESS FOR PLAYERS, REFEREES, SUPPORTERS AND VOLUNTEERS ACROSS NON-LEAGUE FOOTBALL



SCAN THIS QR CODE TO ACCESS THE COURSE



WHO ARE STATE OF MIND?

STATE OF MIND SPORT IS A CHARITY THAT HARNESSSES THE POWER OF SPORT TO PROMOTE POSITIVE MENTAL HEALTH AMONG OUR SPORTSMEN AND WOMEN, FANS AND WIDER COMMUNITIES, AND ULTIMATELY TO PREVENT SUICIDE.

WE RAISE AWARENESS OF THE ISSUES SURROUNDING MENTAL HEALTH AND WELL-BEING AND DELIVER EDUCATION ON THE SUBJECT TO ALL LEVELS OF SPORT, BUSINESS, EDUCATION AND COMMUNITY GROUPS.

“
STATE OF MIND SPORT IS PROUD TO BE THE OFFICIAL CHARITY PARTNER OF THE NORTH WEST COUNTIES FOOTBALL LEAGUE
”

PYROTECHNICS*

PRESENT

DANGERS TO

SPECTATORS, PLAYERS

AND OFFICIALS.



The North West Counties Football League takes a zero tolerance approach to the use of pyrotechnics in its stadiums. It is a criminal offence to enter a stadium carrying pyrotechnics, or set them off.

Anyone found carrying, or setting off pyrotechnics will be reported to the authorities and banned from attending matches.

* Pyrotechnics include flares, smoke bombs & fireworks.

Scan to Report



NWCFL.COM



Official Website of The North West Counties Football League

News | Fixtures | Results | Stats

Club Info | Archives | Store

Search 'nwcfl' on:



reusch

**OFFICIAL GOALKEEPING
PARTNER OF THE
NORTH WEST COUNTIES
FOOTBALL LEAGUE.**

**PROUD SPONSOR OF THE
GOALKEEPER OF THE MONTH
AND GOALKEEPER OF THE
YEAR AWARDS**

Shop online using discount
code 'NWCFL' > www.reuschuk.com

Follow us on social media >>>

>>> www.facebook.com/ReuschUK

>>> www.twitter.com/ReuschUK





MATCHDAY SQUADS



James **McCulloch** ©

Charlie **Ball**

Ben **Barnes (GK)**

James **Barrigan**

Kian **Bell**

Delial **Brewster**

Harry **Cannon-Noren**

Matty **Coughlan**

Tom **Dean**

Mason **Duff**

Danny **Forbes**

Matty **Hamilton**

Osawemwengie **Imadiji**

Callum **Laird**

Sam **Sheen**

John **McGrath**

Peter **Moore**

Stephen **Rigby**

Cian **Spencer-McDermott**

Che **Trapasso-Tully**

Anthony **Walsh**

Sam **Turner**

Owen **Cushion**

Jordan **Wynne**

James **Salkeld**



Victor **Abadaki**

Jack **Banister**

Lewis **Billingsley**

Andrew **Briggs**

Jake **Kenny**

Jack **McConnell**

Billy **Matthews**

Oliver **Martin (GK)**

James **Moore**

Thomas **Murray**

Harvey **Roberts**

Chris **Rowney**

Paul **Riley**

Steven **Yarwood**

Manager: David Dempsey

Asst Manager: Chris Stammers

Coaches: Ryan Bowen & Liam Bowyer

Physio: Liam Thompson

Manager: Paul Marshall

Coaches: Andrew Harris, Zeki

Istanbul, Stephen Piggott, Benjamin

Wharton, Steven Yarwood

Physio: Emily Guest

Referee: Joseph Hind

Assistants: Jonathan Ferguson, Joseph Cunliffe

EXCLUSIVE



Birkdale
Insurance Group